



The POWER of Love

Happy Valentine's Day from LCEF!

February 2009 Interest Rate

Full K.I.D.S. Stamp Books (a \$25 investment) sent to LCEF in St. Louis earn:

- 0.500% as *Dedicated Certificates* (available as custodial investments only)
- 1.000 - 2.625% (depending on balance) *StewardAccount* (\$100 min. investment)
- 3.280% - *60 Month Floating Term Note* (\$100 min. investment & can add full books in time.) View complete rates at www.lcef.org %

Welcome New K.I.D.S. Coordinators!



We have been blessed with new K.I.D.S. coordinators in the upper Midwest region. Please take a moment to give them a call or send an e-mail to say, "Welcome!"

Teacher and mother of three, **Heidi Pawleck** (pictured above) is helping students at Trinity Lutheran School in Waconia, MN learn some good stewardship and investing life lessons.

Heidi's Home Ph: (320) 395-4244; E-Mail: pawelk@embarqmail.com.

Don Mourand has actually had a K.I.D.S. Stamp program rolling for over 3 years and coordinates stamps for the Sunday School children at Christ the King in Ishpeming, MI. Don and his wife enjoy living in the south for the winter, so he has some outstanding high school students to assist with stamp sales while they're away. Great idea Don! Don's Home Ph: (952) 475-9721; E-Mail: dmourand@chartermi.net.

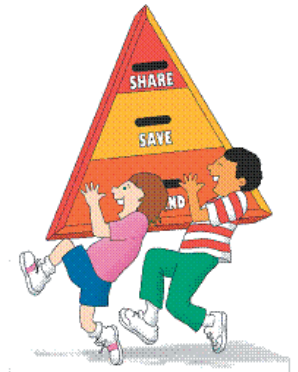
A FIRST FOR NORTH DAKOTA DISTRICT! Church Secretary **Ruth Johnson** at St. John Lutheran Church in Hillsboro, ND is a new K.I.D.S. coordinator. Ruth and her husband (an elder) are kicking off the first K.I.D.S. Stamp program in their district. Ruth's children were KIDS stampers years ago, so it's good to have the program back. *Thanks Ruth!*

Last fall **Darlene Strack** started the stamp program and serves as Trinity Lutheran School's K.I.D.S. Coordinator in Athens, WI. Darlene also has a grandson, Grant with whom she spends a lot of time. Grant is 18 and undergoing treatments for a rare form of leukemia. Grant has impressed grandma time and again with a positive attitude and a great heart. Our prayers are offered up for you both Darlene! Home Ph: (715) 257-7376; E-Mail: gmagpa60@verizon.net.

Let's get to know one another as fellow Christians and servants! %

K.I.D.S. Stewardship Boxes Order Today!

"This is so cool!" That's what kids and adults alike are saying when they see the new triangular **K.I.D.S. Stewardship Box!**



It's now available for all existing K.I.D.S. Stamp program participants. Coordinators, please contact the national office to order for your students. What a great Valentine's Day gift! This simple learning tool will assist parents and teachers as they introduce financial stewardship into children's daily lives and make it easier for children to separate their chore and gift money appropriately. The box contains three separate compartments: Share, Save, Spend. Each compartment contains

Continued on page two

K.I.D.S. NEWS is a quarterly publication for LCEF K.I.D.S. coordinators throughout the Minnesota South District LCMS. K.I.D.S. is an educational program for children offered by the Lutheran Church Extension Fund (LCEF).

NEWS

Kids Into Discipleship & Stewardship



K.I.D.S. Investors

Can we make it 1,000?

There are MORE THAN 3,270 successful K.I.D.S. investors supporting LCMS churches and schools (at least one full book sent into the LCEF ministry.)

In Minnesota South District (metro and southern third of the state,) we have more than 800. Let's top 1,000 this school year! Share the opportunity of K.I.D.S. stamp investing with your students and children this month.



Through the power of prayer, cheerful service and dedication, we can make a difference for the Church and our children. Every single LCEF investor is an important part of helping the ministry reach out to our churches and schools with affordable loan funding. While investments work for our investors, they also work for the church.

Minnesota South K.I.D.S. investors deposited \$1,250 in the month of December alone! Quarters can really add up over time. North Wisconsin and North Dakota are participating as well. We have wonderful support from our families; keep sharing the good news. Have you congratulated your K.I.D.S. this month in the church/school newsletter? Always remember to encourage your students and thank them for helping to build churches and schools for God. %

The Bulletin Board

February - We have become a nation of living beyond our means. Give your children and students a chance to take a better path with K.I.D.S. stamps. Children can invest in their futures and the Church at the same time! (*insert your stamp day/time/location*).

March - Good stewardship takes prayer and practice. Remember to sit down with your child each week after chores. Talk about what they want to give back to God, what to save and what he/she might need for spending. Then visit our stamp table (*insert day/time/location of stamp sales and your contact info*) .

April - We are so thankful to have a place in which to worship on Easter! Help other LCMS churches build by investing with K.I.D.S. stamps. Visit our table (*insert your stamp day/time/location*) to learn more. %

ASH WEDNESDAY
February 25th

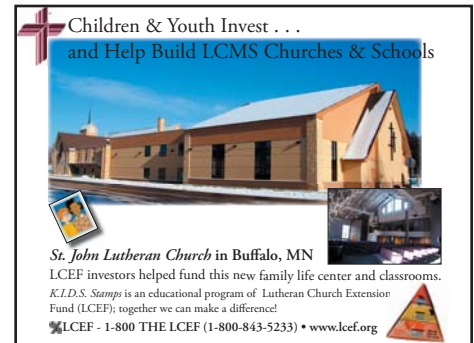
Stewardship Boxes

Continued from page one

a slot to hold the child's money. The three smaller boxes can stand alone or fit into a colorful, triangle-shaped holder containing instructions providing a basic definition of each good money habit.

Order from www.lcef.org / Investments / Individual / K.I.D.S. You can also search KIDS at Forms and Brochures for the order form. %

NEW! Stamp Table Photo Enclosed



Please insert the enclosed photo flyer (sample above) in an acrylic frame and display at your K.I.D.S. Stamp Table.

It's a great way for your students and parents to see how K.I.D.S. stamps (and all LCEF investors) are helping build our LCMS churches and schools. %

MAKE COPIES OF YOUR ENCLOSED PUZZLE PAGES FOR YOUR STAMP VISITORS. A DIFFERENT PUZZLE EACH WEEK!

Ask Parents

Match Investments for College?

Have you asked your parents if they're willing to *MATCH* their children's investments in a Coverdell Education Savings Account? Call the national LCEF office at 1-800-843-5233 to learn more.

Offer Coverdell LCEF brochures at your stamp tables along with the offering circular. %



Contact: Maria Hendrickson, Promotion Director
LCEF - Minnesota South District - LCMS
14301 Grand Ave S • Burnsville MN 55306
Maria.Hendrickson@MNSDistrict.org * Ph: 612.802.9731
or Admin. Asst. Donna.Timm@MNSDistrict.org * 952.223.2162

